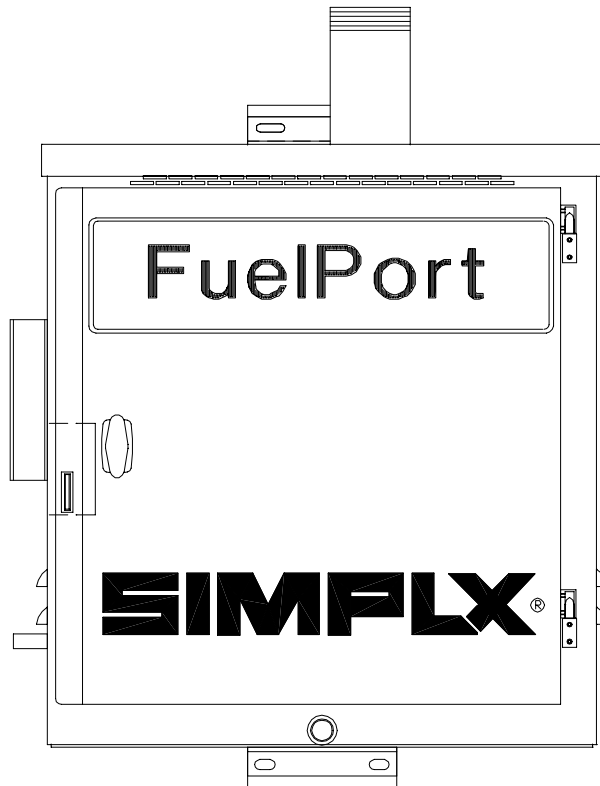


SIMPLX[®]

FUELPORT MANUAL

August 2003



DESCRIPTION

The Simplex FuelPort is a compact, economical solution for simple filling and spill prevention for aboveground storage tanks. The FuelPort includes all valves and fittings necessary for hose connection from a pumper truck to an aboveground storage tank. The FuelPort can be bolted to the tank, hung from the fill pipe, or attached via clamps to a 2" or 3" post. The FuelPort is suitable for use with fuel oil or gasoline. Includes:

- Weatherproof, lockable box with 7 gallon spill containment
- Tank mounting weld brackets (2)
- FuelPort mounting tabs to accept weld brackets (above) or post clamps (2" or 3", optional)
- Quick disconnect hose coupling with dust plug
- Check valve
- Shutoff valve
- Hand pump for spill containment, with shutoff and check valve
- Ground stud

Specifications

Fitting size: 2", 3" or 4"

Spill containment: 7 gallons

Hand pump capacity: 1 gpm

Paint: white epoxy

Net weight: 129 lbs.

Fittings: 2", 3" or 4"

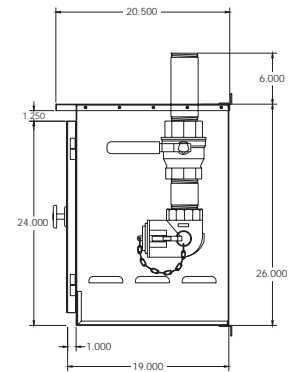
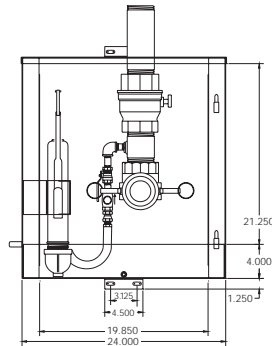
Inlet to accept:

- Standard fitting: Quick detachable coupling with check valve, shutoff ball valve
- Optional fitting: Buyer specified dry connect

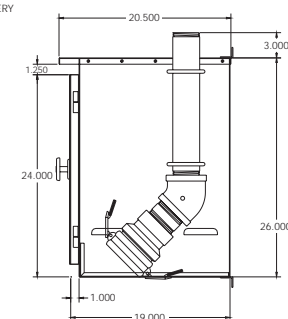
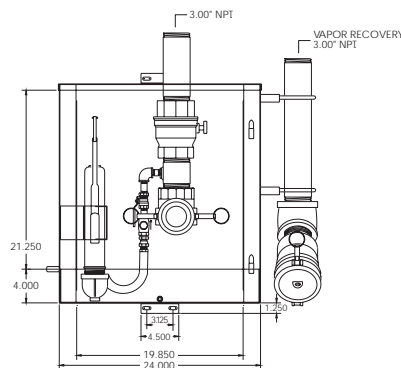
Outlet fitting:

- Threaded pipe welded in top panel, 3" NPT threads
- Optional gasoline vapor recovery adaptor

Standard FuelPort



FuelPort with Vapor Recovery



OPERATION

1. Connect ground cable
2. Unlock FuelPort and open door
3. Connect delivery hose to hose coupling
4. Open valve on truck and valve in FuelPort
5. Start fill pump
6. Stop fill pump when tank is full or as needed
7. Close truck valve and valve in FuelPort
8. Disconnect delivery hose from hose coupling
9. Close and lock FuelPort door

ORDER BY MODEL NUMBER:

Basic Model- Option - Option - Option

MODELS

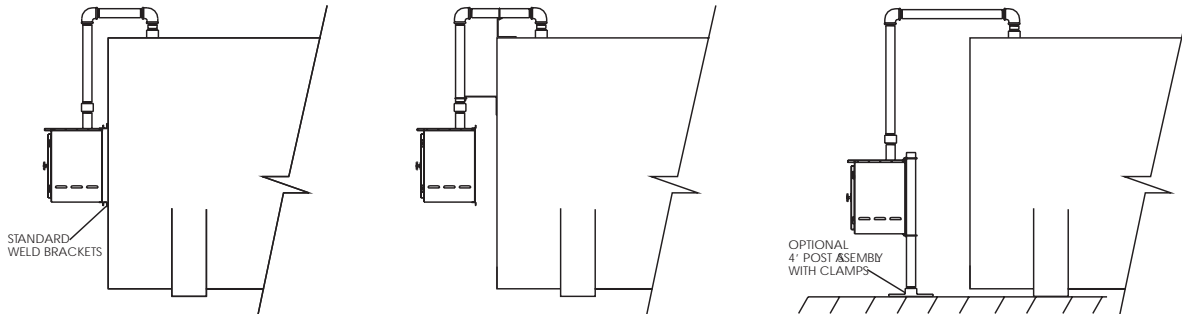
NO.	APPLICATION	FITTINGS
FP2	Oil or gas	2"
FP3	Oil or gas	3"
FP3GV	Gas, w/vapor rec. adaptor	3"
FP4*	Oil or gas	4"
FP4GV*	Gas, w/vapor rec. adaptor	4"

*4" inlet, 3" internals and outlet

OPTIONAL ACCESSORIES FOR FUELPORT

NO.	DESCRIPTION
-010	2" fire rated shutoff valve in lieu of bronze valve
-012	3" fire rated shutoff valve in lieu of bronze valve
-015	2" fusible link fire valve on outlet
-017	3" fusible link fire valve on outlet
-020	Fire rated shutoff valve assembly for installation on AST fuel inlet, consisting of fire rated ball valve and self-closing fusible link valve. 2"
-022	Fire rated shutoff valve assembly for installation on AST fuel inlet, consisting of fire rated ball valve and self-closing fusible link valve. 3"
-085	2" post clamps
-086	3" post clamps
-087	2" post assembly with base, 48" high, w/clamps
-088	3" post assembly with base. 48" high, w/clamps

FuelPort Installation:



- Mount to side of tank using weld brackets (included with FuelPort)

- Hang from Fill Pipe (pipe hanger required)

- Clamp to Post (see options list)

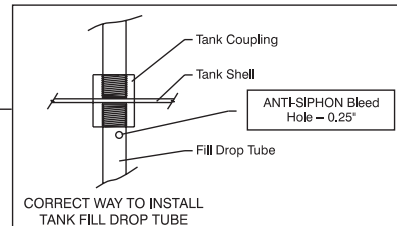


FIRE AND SPILL HAZARD NOTICE

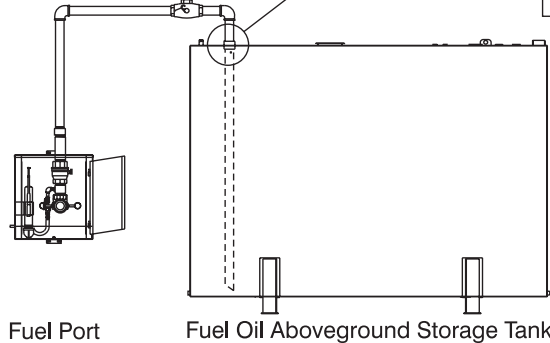
IMPORTANT INSTALLATION NOTE

To Prevent Accidental Spill Due To Siphon Backflow, Tank Must Have Drop Tube With ANTI-SIPHON Bleed Hole As Shown Below

Install Emergency, Self-Closing, Fusible-Link Fire Valve in Supply Line Between Automatic Fuel Port And Tank Available From Simplex, P/N 22400054A



CORRECT WAY TO INSTALL TANK FILL DROP TUBE



SIMPLX®

FuelPort System

Mfd. By: Simplex, Inc., Springfield, IL USA
(217)525-6995

W.O. #

MODEL: FUEL PORT

GAS

DIESEL

The information herein is the property of Simplex, Inc. and/or its subsidiaries. Without written permission, any copying, transmitting to others, and other use except that for which it is loaned, is prohibited