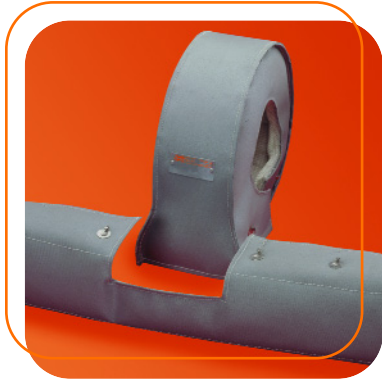


# InsulTech TRIDENT™ 1000

*Rapid Design :: Rapid Production :: Rapid Delivery*

## *The Versatile, Durable, Affordable Softwrap*



Whatever your specs – from snug-fitting, one-piece construction to multi-piece designs – InsulTech can create, produce and deliver exactly what you need.

- Rugged & Economical
- Excellent Thermal Properties – Up to 1200°F
- Designed for Severe Environments
- Impervious to Liquids and Oils
- Our Best Seller

### *Rely on the Experts at InsulTech...*

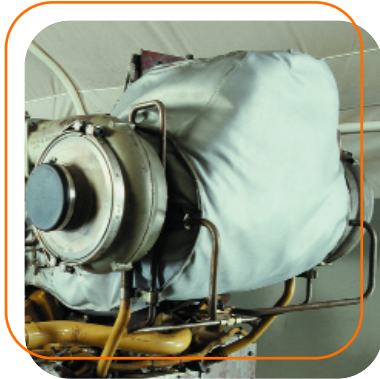
We provide insulation solutions for any situation. Pull your specs together and give us a call at 714.384.0506 or send an e-mail to [solutions@insultech.com](mailto:solutions@insultech.com)!



# InsulTech TRIDENT™ 2000

*Rapid Design :: Rapid Production :: Rapid Delivery*

## *A High-Performance Hybrid*



InsulTech Trident 2000 requires no tooling... is totally encapsulated... and is designed for easy installation.

- Temperature Rated To 2000°F
- Ideal for Close Tolerance Applications
- Versatile, Removable & Durable
- No Susceptibility To Wicking
- Impervious To Flammable Liquids (Fireproof)
- High Temperature Outer Cover

### *Rely on the Experts at InsulTech...*

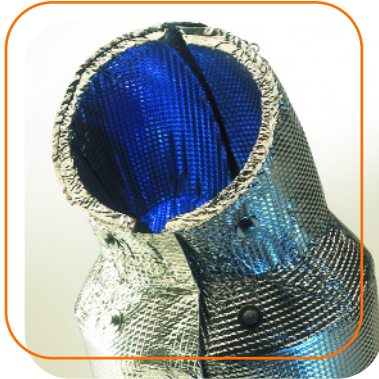
We provide insulation solutions for any situation. Pull your specs together and give us a call at 714.384.0506 or send an e-mail to [solutions@insultech.com](mailto:solutions@insultech.com)!



# InsulTech TRIDENT™ 3000

*Rapid Design :: Rapid Production :: Rapid Delivery*

## *Stands Up To Heat & Backed By 2-Year Warranty*



InsulTech Trident 3000 is rated to temperatures of 2000°F and beyond. Beta tests have shown dramatic temperature reductions. The 3000 is totally encapsulated in stainless steel and is removable. It can be pressure-washed without structural damage.

- Impervious to Flammable Liquids (Fireproof)
- Durable & Versatile
- Good Vibration Resistance
- In-House Tooling

### *Rely on the Experts at InsulTech...*

We provide insulation solutions for any situation. Pull your specs together and give us a call at 714.384.0506 or send an e-mail to [solutions@insultech.com](mailto:solutions@insultech.com)!



# InsulTech TRIDENT™ 4000

*Rapid Design :: Rapid Production :: Rapid Delivery*

## *Ideally Suited for Heavy Equipment Users*



When it's got to be tough... when your demands for thermal control are in the most difficult environments... then InsulTech Trident 4000 is your solution. The outer shell can be constructed of 16 to 22 gauge sheet metal and provides the enduring insulation encapsulation you must have.

- Temperatures to 2000°F +
- Impervious to Flammable Liquids
- Our Most Durable Composite
- Ideal for Heavy Equipment & Marine
- Total Insulation Encapsulation

### *Rely on the Experts at InsulTech...*

We provide insulation solutions for any situation. Pull your specs together and give us a call at 714.384.0506 or send an e-mail to [solutions@insultech.com](mailto:solutions@insultech.com)!



# InsulTech TRIDENT™ 5000

Rapid Design :: Rapid Production :: Rapid Delivery

## *A Specialty Product Devoted To Transportation*



InsulTech Trident 5000 is a completely encapsulated, low-temperature thermal insulation system that dramatically reduces the temperature and noise in its versatile applications: structural walls and doors, cabs and bulkheads, floor boards and fire walls. Used for motor coaches, commercial buses and vans for mass transit, general shuttle, tour, charter, community and paratransit end users. InsulTech Trident 5000 protects against daily and seasonal temperature fluctuations, heat, cold, moisture, mildew and rodents. In addition to transit authorities, big rig truck companies across the nation are discovering the benefits of this product.

- FTA Docket 90 Compliant Materials
- Insulation Thermal Resistance > R-8 Value
- Outstanding Thermal & Acoustical Properties
- Extremely Durable
- Precision Fit
- Custom Design For Easy Installation

### ***Rely on the Experts at InsulTech...***

We provide insulation solutions for any situation. Pull your specs together and give us a call at 714.384.0506 or send an e-mail to [solutions@insultech.com](mailto:solutions@insultech.com)!

